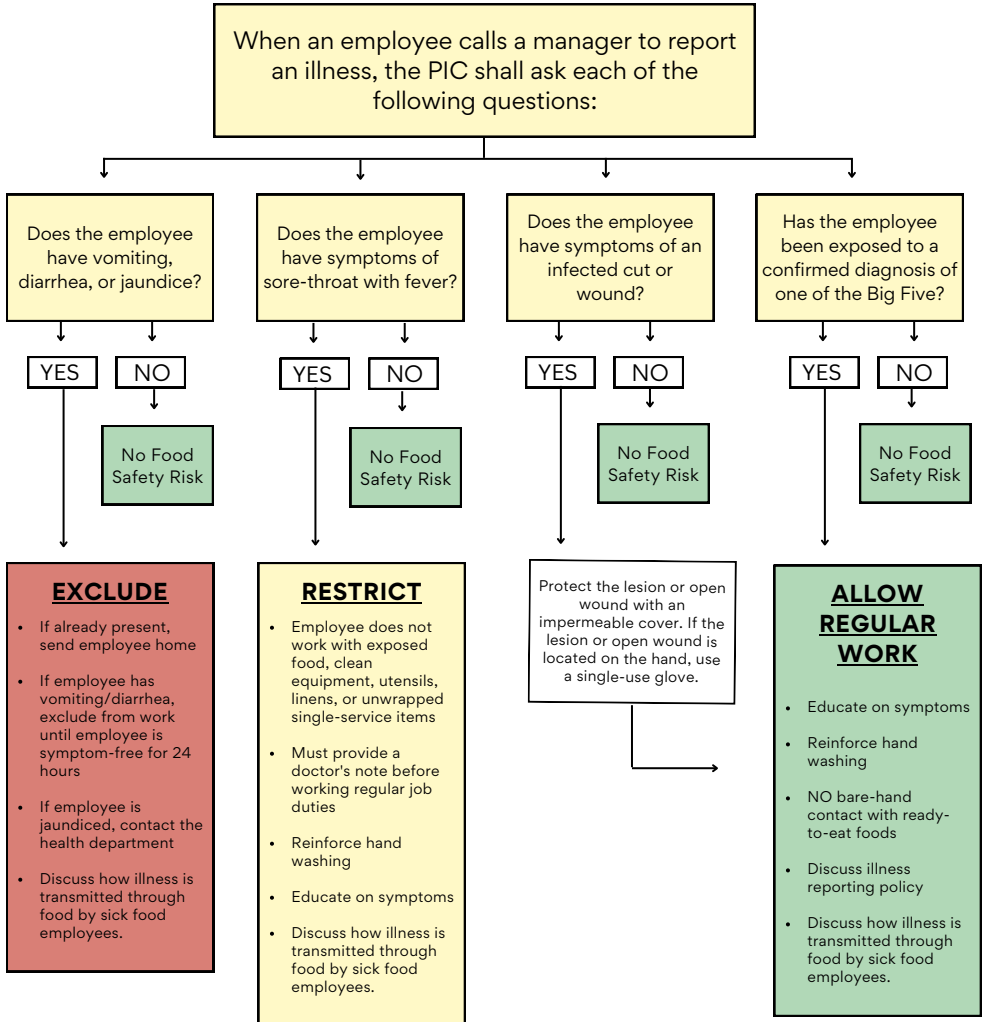


Jersey County Health Department

EMPLOYEE ILLNESS DECISION GUIDE

Use this flow chart as a guide to determine if an employee with an **undiagnosed** illness can spread the illness through food and should be restricted or excluded from work.



If a food employee reports a diagnosis of **Norovirus, Shiga toxin-producing E.Coli (STEC), Shigella, Hepatitis A virus, or Salmonella Typhi**, IMMEDIATELY exclude the employee and contact the Jersey County Health Department at 618-498-9565 ext. 321 for guidance.

Criteria for Exclusion from Work: Any food employee with an illness due to the 5 listed above must report the diagnosis to the manager. The employee MUST be excluded from working in the retail food establishment, and the law requires the manager to notify the Jersey County Health Department immediately.